

Lamp Current (A): 9.2A  
 Ignitor Voltage (Min.): 1.1KV  
 Luminaire Rating: Enclosed  
 Burning Position: Universal

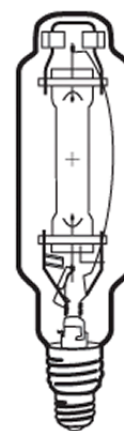
### HIT 2000W/U/742 Plus

Product Number: 00066

**Lamp Type:** Tubular Metal Halide

#### Performance Data

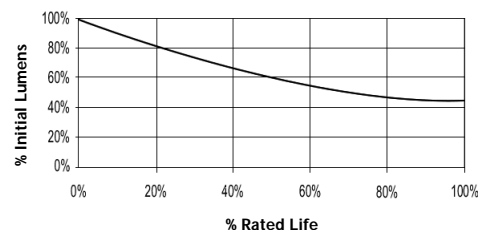
Light Output (Lumens @ 100 hours)	230000V
Lamp Lumens Per Watt	115
Rated Life (Hrs. @ 10 Hr. /Start)	5000V / 2500H
Correlated Colour Temperature (K)	4200
Chromaticity (CIE - X Y)	360, 392
Colour Rendering Index (CRI) or (Ra)	68
Typical Warm Up Time (Minutes)	3-5
Typical Hot Restart Time (Minutes)	10-15
Burning Position	Universal



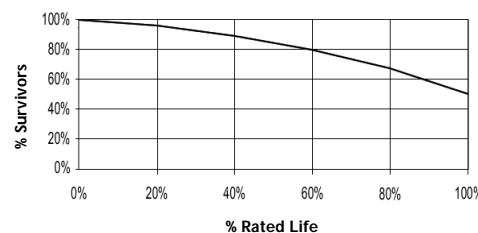
#### Physical Data / Requirements

Base Designation	E40
Bulb Designation	T100
Bulb Diameter (mm)	100
Max. Overall Length (mm)	420
Light Centre Length (mm)	220
Effective Arc Length (mm)	104
Max. Base Temperature (°C)	350
Max. Bulb Temperature (°C)	850
Luminaire Type	Enclosed
Socket Pulse Rating (KV)	4.5
Mercury Content (mg)	180

Lumen Maintenance



Lamp Mortality



#### Lamp Electrical Data / Requirements

IEC Standard	-
Lamp Wattage (W)	2000
Lamp Operating Voltage (V)	230
Lamp Operating Current (Amps)	9.2
Min. Open Circuit Voltage (RMS)	342
Min. Starting Pulse (Peak V)	1100 - 5000
Min. Pulse Width at 2500V (microseconds)	1
Min. Pulse Rate Per 1/2 cycle	1
Pulse Position (Electrical Degrees)	60-90,, 240-270

**Revision:** 02.03.12

#### Notes:

1) This Product Specification contains data about typical performance at nominal power. Actual values may depend on ballast and applications. Complies with (CE), Low Voltage (CE), WEEE and RoHS Directives.