

Lamp Current (A): 0.9A
 Ignitor Voltage (Min.): 3.5KV
 Luminaire Rating: Enclosed
 Burning Position: Universal

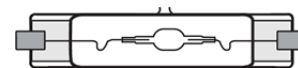
CM-PLUS TD 70W/U/UVS/RX7s/942

Product Number: 00371

Lamp Type: Ceramic Metal Halide

Performance Data

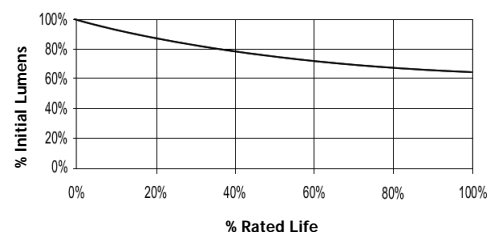
Light Output (Lumens @ 100 hours)	6600
Lamp Lumens Per Watt	94
Rated Life (Hrs. @ 10 Hr. /Start)	15000
Correlated Colour Temperature (K)	4200
Chromaticity (CIE - X Y)	375, 370
Colour Rendering Index (CRI) or (Ra)	90+
Typical Warm Up Time (Minutes)	3
Typical Hot Restart Time (Minutes)	15
Burning Position	Universal



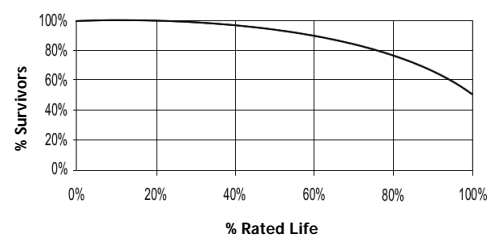
Physical Data / Requirements

Base Designation	RX7s
Bulb Designation	-
Bulb Diameter (mm)	23
Max. Overall Length (mm)	120
Light Centre Length (mm)	57
Effective Arc Length (mm)	-
Max. Base Temperature (°C)	350
Max. Bulb Temperature (°C)	500
Luminaire Type	Enclosed
Socket Pulse Rating (KV)	6
Mercury Content (mg)	5.6

Lumen Maintenance



Lamp Mortality



Lamp Electrical Data / Requirements

IEC Standard	-
Lamp Wattage (W)	72
Lamp Operating Voltage (V)	90
Lamp Operating Current (Amps)	0.9
Min. Open Circuit Voltage (RMS)	198
Min. Starting Pulse (Peak V)	3500-5000
Min. Pulse Width at 2700V (microseconds)	1
Min. Pulse Rate Per 1/2 cycle	1
Pulse Position (Electrical Degrees)	60-90, 240-270

Revision: 05.05.2011

Notes:

1) This Product Specification contains data about typical performance at nominal power. Actual values may depend on ballast and applications. Complies with (CE), Low Voltage (CE), WEEE and RoHS Directives.