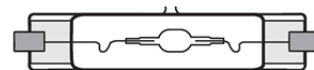


Lamp Current (A): 1.8A  
 Ignitor Voltage (Min.): 3.5KV  
 Luminaire Rating: Enclosed  
 Burning Position: Universal

**CM-PLUS TD 150W/U/UVS/RX7s/830**
**Product Number: 00372**
**Lamp Type:** Ceramic Metal Halide

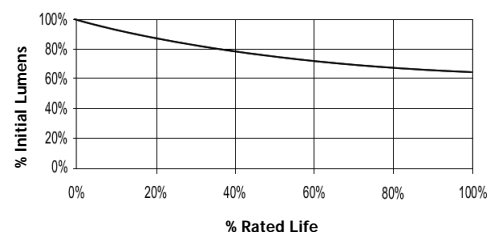
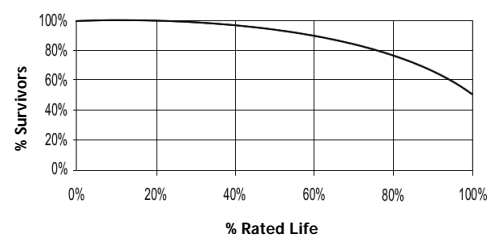
### Performance Data

Light Output (Lumens @ 100 hours)	14000
Lamp Lumens Per Watt	93
Rated Life (Hrs. @ 10 Hr. /Start)	15000
Correlated Colour Temperature (K)	3000
Chromaticity (CIE - X Y)	435, 400
Colour Rendering Index (CRI) or (Ra)	80+
Typical Warm Up Time (Minutes)	3
Typical Hot Restart Time (Minutes)	15
Burning Position	Universal



### Physical Data / Requirements

Base Designation	RX7s
Bulb Designation	-
Bulb Diameter (mm)	23
Max. Overall Length (mm)	135
Light Centre Length (mm)	66
Effective Arc Length (mm)	-
Max. Base Temperature (°C)	350
Max. Bulb Temperature (°C)	500
Luminaire Type	Enclosed
Socket Pulse Rating (KV)	6
Mercury Content (mg)	8.4

**Lumen Maintenance**

**Lamp Mortality**


### Lamp Electrical Data / Requirements

IEC Standard	-
Lamp Wattage (W)	145
Lamp Operating Voltage (V)	96
Lamp Operating Current (Amps)	1.8
Min. Open Circuit Voltage (RMS)	198
Min. Starting Pulse (Peak V)	3500-5000
Min. Pulse Width at 2700V (microseconds)	1
Min. Pulse Rate Per ½ cycle	1
Pulse Position (Electrical Degrees)	60-90, 240-270

**Revision:** 05.05.2011

### Notes:

1) This Product Specification contains data about typical performance at nominal power. Actual values may depend on ballast and applications. Complies with (CE), Low Voltage (CE), WEEE and RoHS Directives.