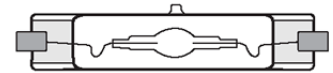


**MH-DE 150W/UVS/FS/6K**
**Product Number: 29963**
**Lamp Type:** Double Ended Rx7s

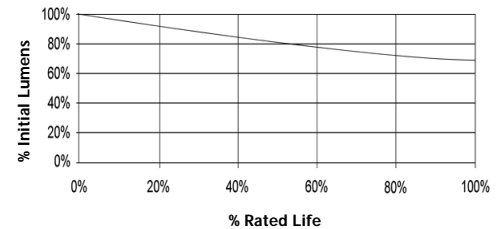
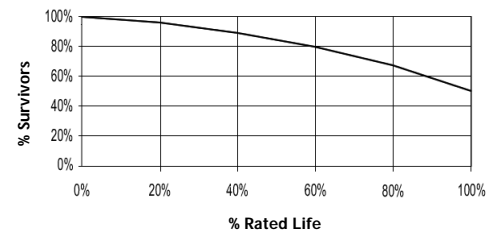
### Performance Data

Light Output (Lumens @ 100 hours)	11250
Lamp Lumens Per Watt	75
Rated Life (Hrs. @ 10 Hr. /Start)	10000
Correlated Colour Temperature (K)	6500
Chromaticity (CIE - X Y)	310, 320
Colour Rendering Index (CRI) or (Ra)	90
Typical Warm Up Time (Minutes)	1-2
Typical Hot Restart Time (Minutes)	2-4
Burning Position	Horizontal±45°



### Physical Data / Requirements

Base Designation	Rx7s
Bulb Designation	T23
Bulb Diameter (mm)	23
Insertion Length (mm)	135.4
Contact to Contact Length (mm)	132.0
Effective Arc Length (mm)	15.0
Max. Base Temperature (°C)	280
Max. Bulb Temperature (°C)	650
Luminaire Type	Enclosed
Socket Pulse Rating (KV)	6
Mercury Content (mg)	8.6

**Lumen Maintenance**

**Lamp Mortality**


### Lamp Electrical Data / Requirements

IEC Standard	61167
Lamp Wattage (W)	150
Lamp Operating Voltage (V)	95
Lamp Operating Current (Amps)	1.8
Min. Open Circuit Voltage (RMS)	198
Min. Starting Pulse (Peak V)	2800-6000
Min. Pulse Width at 2700V (microseconds)	1
Min. Pulse Rate Per ½ cycle	1
Pulse Position (Electrical Degrees)	60-90, 240-270

**Revision:** 09.01.12

### Notes:

1) This Product Specification contains data about typical performance at nominal power. Actual values may depend on ballast and applications. Complies with (CE), Low Voltage (CE), WEEE and RoHS Directives.