

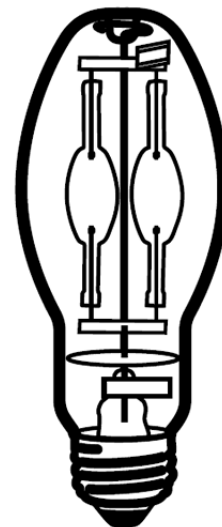
### HIE 100W/U/PS+S/740

### Product Number: 42318

**Lamp Type:** Pulse Start Sustainability

#### Performance Data

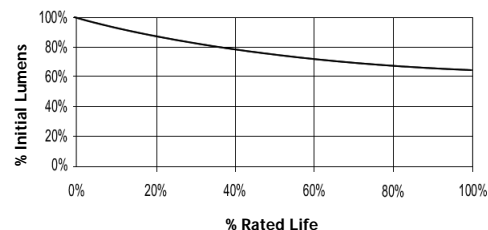
Light Output (Lumens @ 100 hours)	9000
Lamp Lumens Per Watt	90
Rated Life (Hrs. @ 10 Hr. /Start)	40000
Correlated Colour Temperature (K)	4000
Chromaticity (CIE - X Y)	385, 390
Colour Rendering Index (CRI) or (Ra)	68
Typical Warm Up Time (Minutes)	1-2
Typical Hot Restart Time (Minutes)	2-4
Burning Position	Universal



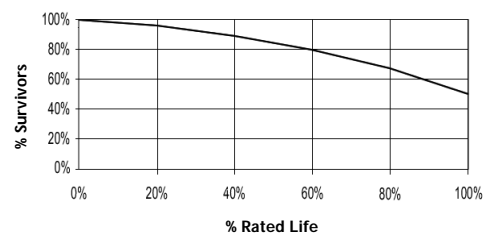
#### Physical Data / Requirements

Base Designation	E27
Bulb Designation	E54
Bulb Diameter (mm)	54
Max. Overall Length (mm)	141
Light Centre Length (mm)	89
Effective Arc Length (mm)	12.7
Max. Base Temperature (°C)	120
Max. Bulb Temperature (°C)	400
Luminaire Type	Enclosed
Socket Pulse Rating (KV)	4.5
Mercury Content (mg)	18.0

**Lumen Maintenance**



**Lamp Mortality**



#### Lamp Electrical Data / Requirements

IEC Standard	-
Lamp Wattage (W)	100
Lamp Operating Voltage (V)	100
Lamp Operating Current (Amps)	1.1
Min. Open Circuit Voltage (RMS)	198
Min. Starting Pulse (Peak V)	3000-4500
Min. Pulse Width at 2700V (microseconds)	1
Min. Pulse Rate Per 1/2 cycle	1
Pulse Position (Electrical Degrees)	60-90, 240-270

**Revision:** 01.06.12

#### Notes:

1) This Product Specification contains data about typical performance at nominal power. Actual values may depend on ballast and applications. Complies with (CE), Low Voltage (CE), WEEE and RoHS Directives.