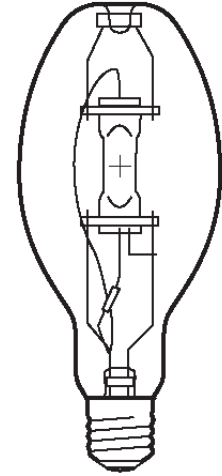


Lamp Current (A): 3.2A
 Ignitor Voltage (Min.): 0.6KV
 Luminaire Rating: Enclosed
 Burning Position: Universal

HIE 400W/C/U/EURO/4K
Product Number: 88787
Lamp Type: Euro Metal Halide

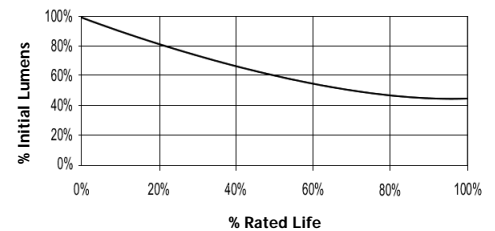
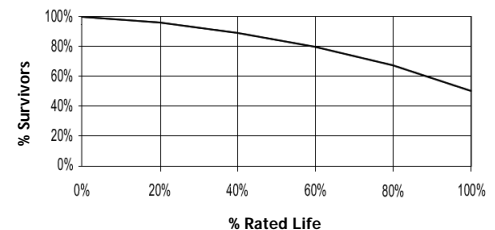
Performance Data

Light Output (Lumens @ 100 hours)	34000
Lamp Lumens Per Watt	85
Rated Life (Hrs. @ 10 Hr. /Start)	15000
Correlated Colour Temperature (K)	3700
Chromaticity (CIE - X Y)	395, 390
Colour Rendering Index (CRI) or (Ra)	70
Typical Warm Up Time (Minutes)	3-5
Typical Hot Restart Time (Minutes)	8-12
Burning Position	Universal



Physical Data / Requirements

Base Designation	E40
Bulb Designation	E120
Bulb Diameter (mm)	120
Max. Overall Length (mm)	296
Light Centre Length (mm)	182
Effective Arc Length (mm)	N/A
Max. Base Temperature (°C)	250
Max. Bulb Temperature (°C)	400
Luminaire Type	Enclosed
Socket Pulse Rating (KV)	-
Mercury Content (mg)	55.0

Lumen Maintenance

Lamp Mortality


Lamp Electrical Data / Requirements

IEC Standard	-
Lamp Wattage (W)	400
Lamp Operating Voltage (V)	135
Lamp Operating Current (Amps)	3.2
Min. Open Circuit Voltage (RMS)	198
Min. Starting Pulse (Peak V)	600
Min. Pulse Width at 540V (microseconds)	260
Min. Pulse Rate Per ½ cycle	1
Pulse Position (Electrical Degrees)	60-90

Revision: 07.06.12

Notes:

- 1) This Product Specification contains data about typical performance at nominal power. Actual values may depend on ballast and applications. Complies with (CE), Low Voltage (CE), WEEE and RoHS Directives.
- 2) This lamp is also compatible with a 3.0-4.5kV ignitor
- 3) Lamp data is based on vertical operation. For horizontal operation lumen output will be reduced by 10% and lamp life reduced by 25%.